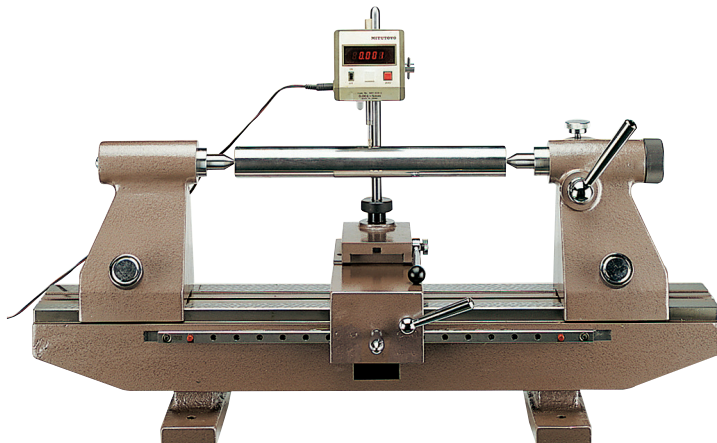


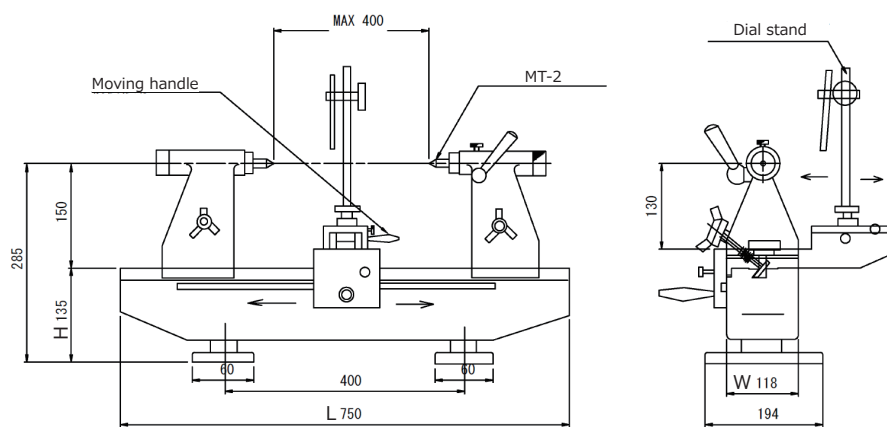
Stock No.562S

## Slide guide type bench center (Type-SG)

- The dial gauge stand can be moved right and left and backward and forward.
- The dial gauge stand can be moved horizontally and vertically to the center shaft. This checker can be used for inspections of the bending of shafts and the runout of shaft flanges.
- \* A dedicated stand is attached to all models. A dial gauge and a test bar are not attached.



■ Dimensional drawing Unit : mm



Material : Cast iron (Bed, Head)  
 Package : Reinforced cardboard  
 Accessories: Certificate of inspection

Product No	Stock No	L (mm)	W (mm)	H (mm)	Center distance (mm)	Swing (mm)	Parallelism between center( $\mu\text{m}$ )	Applicable center	Weight (kg)
55-5-1	562-SG1	750	118	135	400	110	5.0	MT-2	60