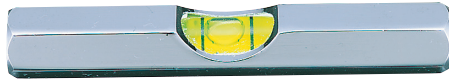


Stock No.572

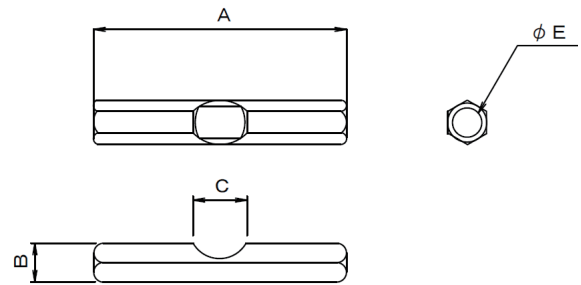
## Pocket level



### Features

- The surfaces of these levels are plated with nickel.
- Two sizes (65 mm and 90 mm) are available.

■ Dimensional drawing Unit : mm



呼び	A	B	C	φ E
65	65	10	14	7.5
90	90	12	26	9.2

Material : C3604  
Package : Carton

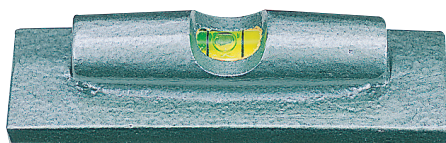
### Configuration of stock number

17 -  $\frac{65}{\text{Size}}$

Product No	Stock No	Size (mm)	Weight (kg)
17-65	572-65	65	0.04
17-90	572-90	90	0.05

Stock No.573

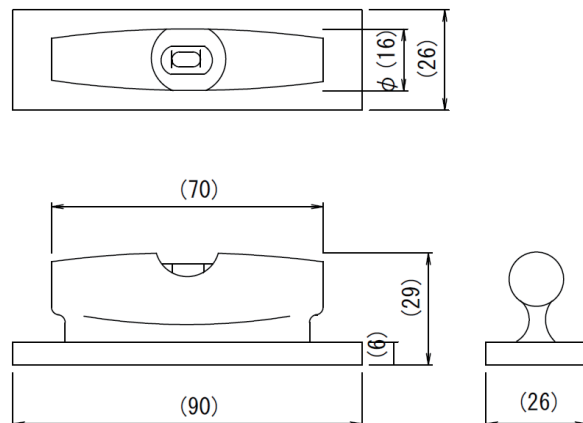
## Small bench level



### Features

- This is a small-sized level made of cast iron.

■ Dimensional drawing Unit : mm



Material : Cast iron  
Package : Carton

Product No	Stock No	全長 (mm)	Weight (kg)
18-90	573-90	90	0.25