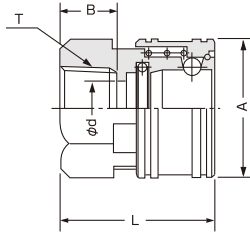


貫通型 寸法表

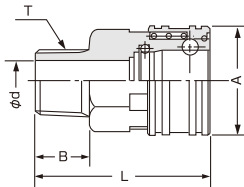
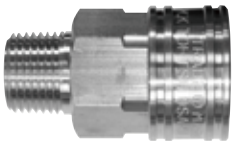
ソケット

SF型(メネジ型)



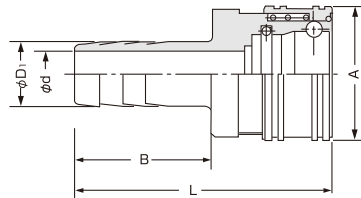
呼び番号	寸法	ソケット(S)				
		L	A	B	φd	T(PT)
F型	1 1/8"	27	17	9	4.5	Rc1/8"
	2 1/4"	31.5	24	12	8	Rc1/4"
	3 3/8"	35	28	13	12	Rc3/8"
	4 1/2"	42	35	16	15	Rc1/2"
	6 3/4"	49	44	19	17	Rc3/4"
	8 1"	59	58	22	27	Rc 1"
	10 1 1/4"	64	67	23	32	Rc1 1/4"
	12 1 1/2"	74	75	24	38	Rc1 1/2"
	16 2"	80	95	24	54	Rc 2"
	20 2 1/2"	95	109	33	60	Rc2 1/2"
	24 3"	100	125	33	78	Rc 3"

SM型(オネジ型)



呼び番号	寸法	ソケット(S)				
		L	A	B	φd	T(PT)
M型	1 1/8"	30	17	9	4.5	R1/8"
	2 1/4"	41	24	12	6.5	R1/4"
	3 3/8"	45	28	13	10	R3/8"
	4 1/2"	56	35	17	13	R1/2"
	6 3/4"	65	44	19	17	R3/4"
	8 1"	76	58	22	25	R 1"
	10 1 1/4"	84	67	23	32	R1 1/4"
	12 1 1/2"	92	75	25.5	38	R1 1/2"
	16 2"	98	95	26	48	R 2"
	20 2 1/2"	113	109	33	60	R2 1/2"
	24 3"	118	125	33	75	R 3"

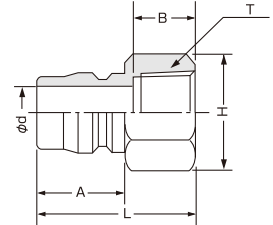
SH型(ホースニップル型)



呼び番号	寸法	ソケット(S)				
		L	A	B	φd	φD1
H型	1 1/8"	45	17	25	4.5	9
	2 1/4"	55.5	24	30	5	9
	3 3/8"	60	28	30	7.5	11
	4 1/2"	70	35	35	10	15
	6 3/4"	82	44	40	15	20.5
	8 1"	102	58	53	20	27
	10 1 1/4"	109	67	60	25	34.5
	12 1 1/2"	132	75	72	32	39
16 2"	145	95	80	42	53	

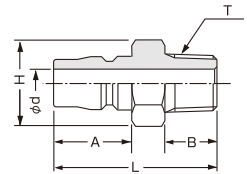
プラグ

PF型(メネジ型)



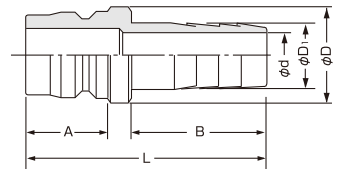
呼び番号	寸法	プラグ(P)					
		L	A	B	H	φd	T(PT)
F型	1 1/8"	26	15	9	14	4.5	Rc1/8"
	2 1/4"	32	18	12	17	6.5	Rc1/4"
	3 3/8"	39	21	13	21	10	Rc3/8"
	4 1/2"	44	24	16	26	13	Rc1/2"
	6 3/4"	50	28	19	32	17	Rc3/4"
	8 1"	62	36	22	41	26	Rc 1"
	10 1 1/4"	64	39	23	50	32	Rc1 1/4"
	12 1 1/2"	75	45.5	26	φ65平取58	38	Rc1 1/2"
	16 2"	80	50.5	24	φ84平取77	50	Rc 2"
	20 2 1/2"	95	57	33	φ90平取85	65	Rc2 1/2"
	24 3"	100	61	33	φ108平取100	78	Rc 3"

PM型(オネジ型)



呼び番号	寸法	プラグ(P)					
		L	A	B	H	φd	T(PT)
M型	1 1/8"	32	15	9	12	4.5	R1/8"
	2 1/4"	37.5	18	12	17	6.5	R1/4"
	3 3/8"	43	21	13	19	10	R3/8"
	4 1/2"	52	24	17	23	13	R1/2"
	6 3/4"	59	28	19	32	17	R3/4"
	8 1"	73	36	22	41	25	R 1"
	10 1 1/4"	82	39	23	50	32	R1 1/4"
	12 1 1/2"	92	45.5	26	φ60平取54	38	R1 1/2"
	16 2"	95	50.5	24	φ84平取75	50	R 2"
	20 2 1/2"	114	57	33	φ90平取85	66	R2 1/2"
	24 3"	118	61	33	φ108平取100	75	R 3"

PH型(ホースニップル型)



呼び番号	寸法	プラグ(P)					
		L	A	B	φD	φd	φD1
H型	1 1/8"	55	15	27	15	4.5	7.5
	2 1/4"	55	18	30	15	5	9
	3 3/8"	60	20.5	32	19	7.5	11
	4 1/2"	66	24	35	22	10	15
	6 3/4"	80	28	40	28	15	20.5
	8 1"	102	36	53	40	20	27
	10 1 1/4"	113	37	58	47	23	31
	12 1 1/2"	132	45.5	72	55	32	39
16 2"	145	50	80	75	43	53	