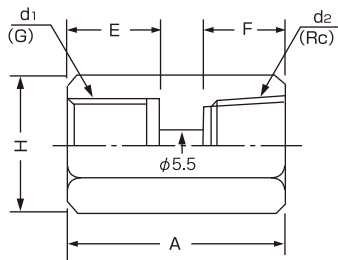
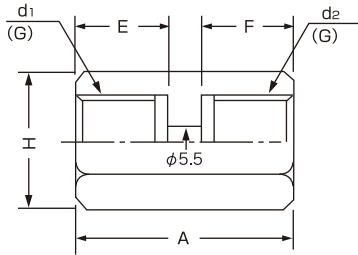


圧力計用ジョイント TJ型

TJ-11

メスメスジョイント

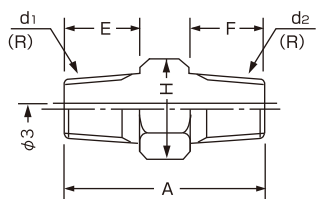
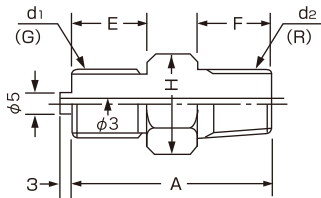
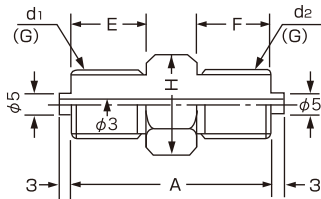


真鍮	鉄	ステンレス	d ₁ ×d ₂ (PF×PF)	A	E	F	H
TJ11-221	—	TJ11-223	G1/4×G1/4	33	14	14	19
TJ11-231	—	TJ11-233	G1/4×G3/8	38		16	22
—	TJ11-242	TJ11-243	G1/4×G1/2	42	16	18	27
TJ11-331	TJ11-332	TJ11-333	G3/8×G3/8	38		16	22
TJ11-341	TJ11-342	TJ11-343	G3/8×G1/2	42	18	18	27
TJ11-441	TJ11-442	TJ11-443	G1/2×G1/2				

真鍮	鉄	ステンレス	d ₁ ×d ₂ (PF×PT)	A	E	F	H
TJ11-271	TJ11-272	TJ11-273	G1/4×Rc1/4	33	14	12	19
TJ11-281	—	TJ11-283	G1/4×Rc3/8	38		14	22
TJ11-291	—	TJ11-293	G1/4×Rc1/2	42	16	17	27
TJ11-371	TJ11-372	TJ11-373	G3/8×Rc1/4	38		12	22
TJ11-381	TJ11-382	TJ11-383	G3/8×Rc3/8		42	14	27
TJ11-391	TJ11-392	TJ11-393	G3/8×Rc1/2	17			
TJ11-471	TJ11-472	TJ11-473	G1/2×Rc1/4	18	12	27	
TJ11-481	TJ11-482	TJ11-483	G1/2×Rc3/8		14		
TJ11-491	TJ11-492	TJ11-493	G1/2×Rc1/2	17			
TJ11-771	—	—	Rc1/4×Rc1/4	31	12	12	19
TJ11-871	—	—	Rc3/8×Rc1/4	38	14	12	22
TJ11-881	TJ11-882	TJ11-883	Rc3/8×Rc3/8	36	14	14	22
—	—	TJ11-973	Rc1/2×Rc1/4	42	17	12	27
TJ11-991	—	TJ11-993	Rc1/2×Rc1/2	42	17	17	27

TJ-12

オスオスジョイント



真鍮	鉄	ステンレス	d ₁ ×d ₂ (PF×PF)	A	E	F	H
TJ12-221	TJ12-222	TJ12-223	G1/4×G1/4	44	16	16	19
TJ12-231	—	TJ12-233	G1/4×G3/8	46		18	22
—	—	TJ12-243	G1/4×G1/2	48	20	22	
TJ12-331	TJ12-332	TJ12-333	G3/8×G3/8		50	18	19
—	TJ12-342	TJ12-343	G3/8×G1/2	20		20	22
TJ12-441	TJ12-442	TJ12-443	G1/2×G1/2	52	20		

真鍮	鉄	ステンレス	d ₁ ×d ₂ (PF×PT)	A	E	F	H
TJ12-271	TJ12-272	TJ12-273	G1/4×R1/4	44	16	16	19
TJ12-281	—	TJ12-283	G1/4×R3/8	46		18	22
—	—	TJ12-293	G1/4×R1/2	48	18	20	22
TJ12-371	TJ12-372	TJ12-373	G3/8×R1/4	46		16	19
TJ12-381	TJ12-382	TJ12-383	G3/8×R3/8		50	18	22
TJ12-391	TJ12-392	TJ12-393	G3/8×R1/2	20			
TJ12-471	TJ12-472	TJ12-473	G1/2×R1/4	48	16	22	
TJ12-481	TJ12-482	TJ12-483	G1/2×R3/8		20		18
TJ12-491	TJ12-492	TJ12-493	G1/2×R1/2	52	20		

真鍮	鉄	ステンレス	d ₁ ×d ₂ (PT×PT)	A	E	F	H
TJ12-771	TJ12-772	TJ12-773	R1/4×R1/4	44	16	16	19
TJ12-781	—	TJ12-783	R1/4×R3/8	46		18	22
—	—	TJ12-793	R1/4×R1/2	48	20	22	
TJ12-881	—	TJ12-883	R3/8×R3/8		50	18	19
TJ12-891	—	TJ12-893	R3/8×R1/2	20		20	22
TJ12-991	TJ12-992	TJ12-993	R1/2×R1/2	52	20		