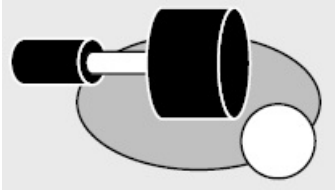




**The product cannot be used exceeding the upper limit of the supplied air pressure.**



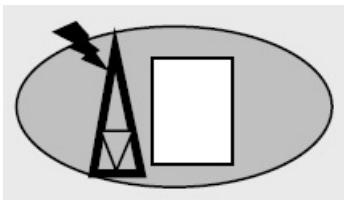
The parts for MANO CLAMP may be damaged during machining, causing the workpiece and those parts to be scattered around.

**Do not open/close the door of the machine until the spindle is completely stopped.**



MANO CLAMP, the workpiece, machining chip, or the like might cause an accident resulting in injury or death.

**Considering possible power interruption due to power failure or any other reason, use a check valve to maintain the air pressure.**



The workpiece might be ejected, causing an accident resulting in injury or death or damage to the machine or other equipment.