

Stock No.561

## Universal model

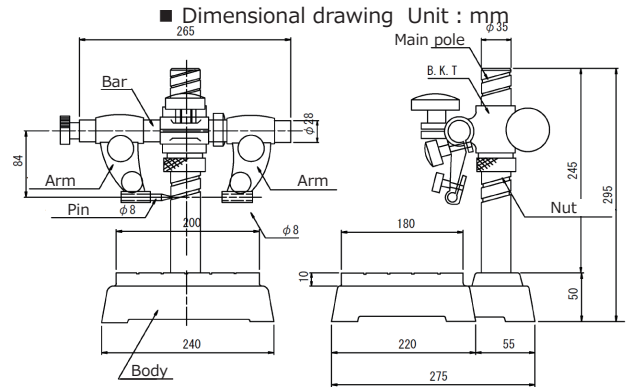
- These comparators can be used for comparative measurements of outside diameters of circular workpieces such as a gauge pin and piston ring.
- By using the attachment, these comparators can be used as vertical-type comparators.



Cast iron type



Granite type



Material : 561-U Cast iron(Body, Arm, B.K.T.), S50C (Table)  
 561-UG Granite (Body), Cast iron (Arm, B.K.T.)  
 Package : Dedicated storage box

### Configuration of product code

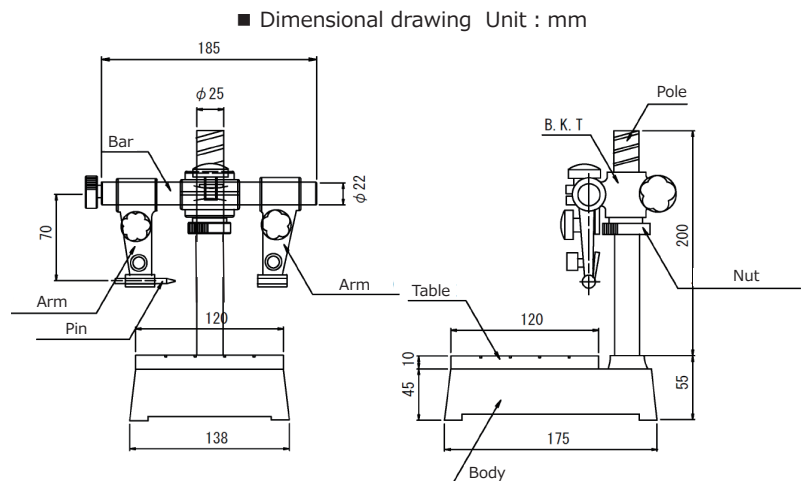
561 - U  
 U → Cast iron  
 UG → Granite

Product No	Stock No	Bed size (mm)	Pole (mm)	Bar (mm)	Flatness ( $\mu$ m)	Weight (kg)
53-1-1	561-U	200 × 180	$\phi$ 35 × 245	$\phi$ 28 × 265	5.0	16
53-2-1	561-UG	230 × 210				

Stock No.561

## Universal small model

- Compared with the universal type, this comparator is smaller in size.
- It is useful for comparative measurements of small-diameter workpieces.



Material : Cast iron (Body, Arm), S50C (Table)  
 Package : Dedicated storage box

Product No	Stock No	Bed size (mm)	Table size (mm)	Pole (mm)	bar (mm)	Flatness ( $\mu$ m)	Weight (kg)
53-3-1	561-US	175 × 138	120 × 120	$\phi$ 25 × 200	$\phi$ 22 × 185	5.0	6